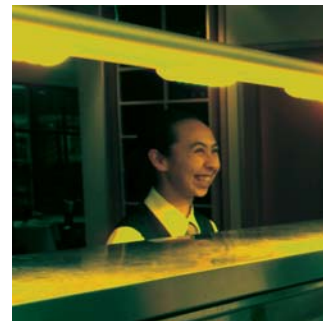
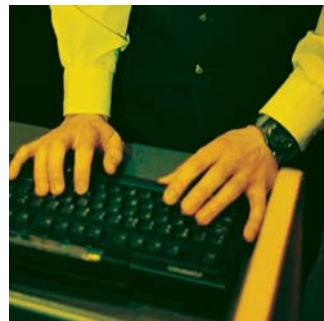
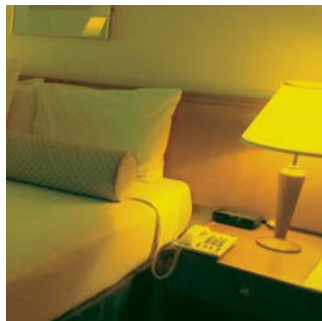




**NATIONAL  
HOTEL  
CORPORATE  
TRAINING**  
NEW ZEALAND  
HOTEL COUNCIL





## WHAT IS A TRAINEESHIP?

This is where you sign up to gain qualifications while you work! It's a practical, hands-on and value for money way of learning, which is relevant to the job you do, and the property you work in. At this stage there are two NZHC National Hotel Corporate Traineeships available:

## NZHC NATIONAL HOTEL ENTRY LEVEL CERTIFICATE, LEVEL 3

This is an entry level programme available at NZHC-member hotels nationwide. It is aimed at those just starting out in the hotel industry and will provide you with the basic skills you need to get ahead.

The training is mostly 'on the job', which means you are learning and getting qualified in the environment you work in. The programme runs for 12 months, and is the first step towards a career in the hotel industry.

## NZHC NATIONAL DIPLOMA IN HOTEL MANAGEMENT, LEVEL 5

This programme is aimed at supervisors and managers working in the hotel industry. It covers areas such as accounting, food and beverage management, host responsibility, staff recruitment, problem solving and all aspects of departmental management in a hotel. In fact, everything you need to further your career in the hotel industry.

## WHAT ARE THE COSTS?

Both of these programmes have been subsidized for NZHC hotel-members by HSI, the Industry Training Organisation, which means that you are provided with quality, value for money and relevant learning.

## WHO PROVIDES THE TRAINING

Your NZHC hotel employer, supervisor and assigned ARTISAN trainer will provide the training required. ARTISAN are a private training provider who will supply all the assessment and support throughout the programme.



**A r t i s a n**  
HAND CHARACTER TRAINING

## HOW DO I FIND OUT MORE?

Talk to **ARTISAN** now!

Phone: **0508 4 ATTITUDE**  
(0508 4 28848)





NEW ZEALAND  
HOTEL COUNCIL

New Zealand Hotel Council is an Incorporated Society whose members include the international chain, independent, privately-owned and boutique hotels throughout the country. Overall, they make up 80% of large hotels and almost 100% in the main centres.



The Hospitality Standards Institute is the Industry Training Organisation for the Hospitality Industry. They develop, maintain and monitor nationally recognized training for those working in the hospitality industry.



Artisan is a nationwide training and people development organisation focused on the service industries of New Zealand. ARTISAN has links with most of the key hotels around the country and qualified trainers and assessors in all regions, ARTISAN is focused on the success of each approved participant on this exciting new programme